



15A TO 25A WIRING UPGRADE

OVERVIEW

By default most spa pools will NOT draw more than 15A at any one time. This is the default factory setup which disables the heater (load shed) when the pumps (jets) are turned on. If you are unsure on your spa pools power requirements, refer to your spa pool in the owners manual or contact one of our friendly sales consultants.

It is generally not required to have the heater engage while the main jet pump is on as heat loss is minimal, however it is possible to wire a dedicated 25A (or 32A) electrical feed for both the heater and pump to run simultaneously.

A 15amp cable with 3-pin plug has been pre-wired to the spa pool's system controller and would need to be removed and cabling hardwired (25A or 32A) from the switchboard directly into the spa pool.

Note: Specific settings must be applied depending on the system. Balboa requires dipswitch changes, while SpaNet can be done via the topside control panel. Make sure you follow the correct instructions for your model as per below:

SETUP 25A FOR SPANET SV-SMART SYSTEM - **PAGE 2**

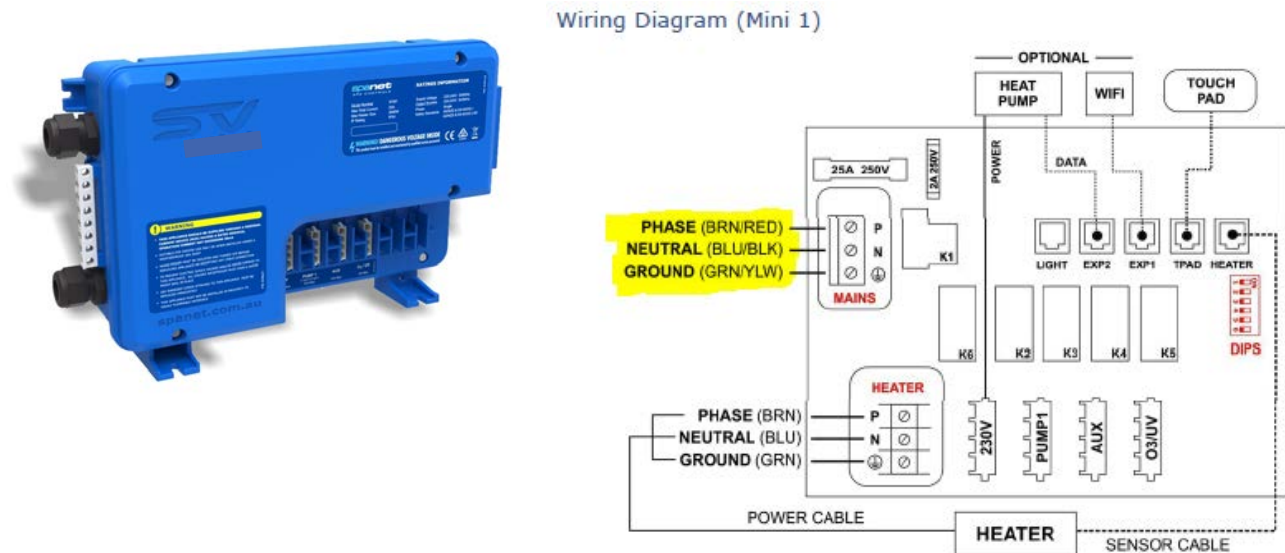
SETUP 25A FOR SPANET SV-MINI SYSTEM - **PAGE 3**

**DO NOT ADJUST THESE SETTINGS UNLESS YOU ARE
A QUALIFIED SERVICE TECHNICIAN OR LICENCED
ELECTRICIAN.**

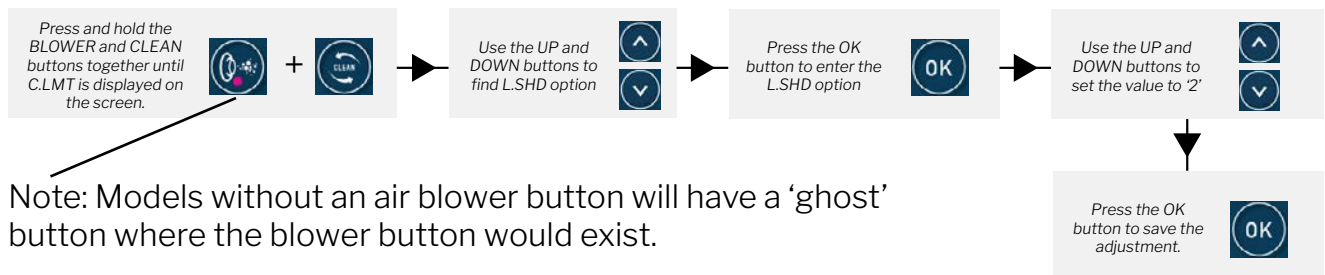
SPANET SV-SMART SYSTEM & PANEL

Page 2/3

Remove the 15A existing cable, and hardwire the single phase cable into the terminal as per diagram below (highlighted yellow).



Using the topside control panel, the OEM menu must be accessed and L.SHD setting must be set to the value of '2' - follow below instructions.



Note: Models without an air blower button will have a 'ghost' button where the blower button would exist.



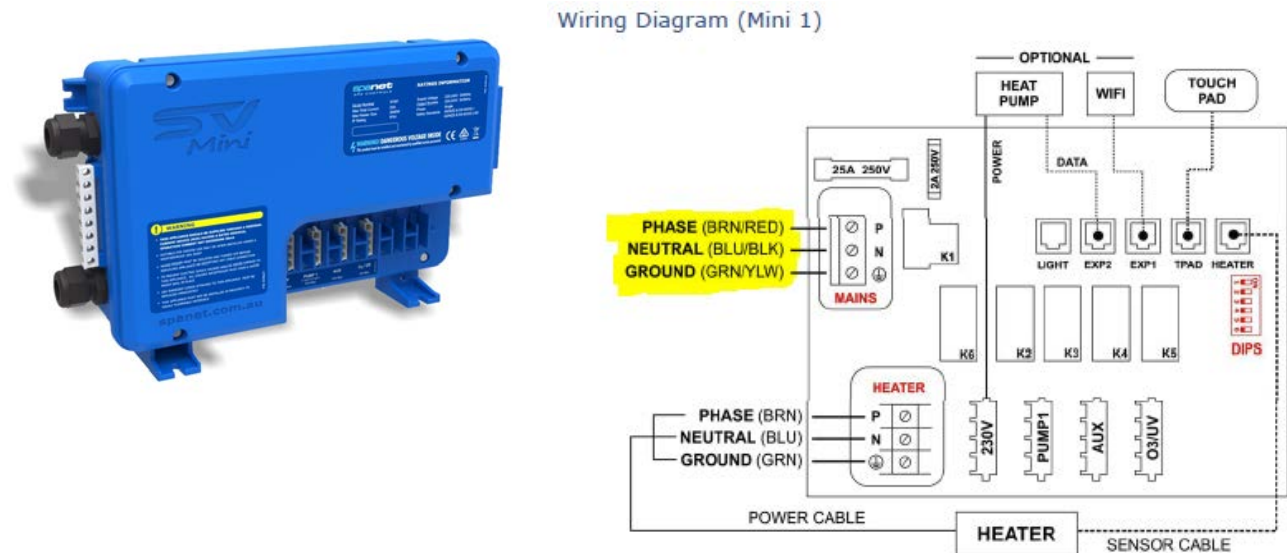
For models with an air blower, press and holder these buttons together to access the menu.



For models without a blower, press the clean button and the ghost button together to access the menu.

Spa will no longer load-shed heater.

Remove the 15A existing cable, and hardwire the single phase cable into the terminal as per diagram below (highlighted yellow).



On the topside control panel follow these instructions to access the OEM menu.

OEM CONFIGURATION MENU

SV Mini controllers feature a hidden OEM configuration menu which allows customisation of certain important spa control settings.

- To access the OEM config menu on a SV Mini 1 press and hold the hidden buttons (shown by the red dotted circles aside) simultaneously until display shows L.SHD. For SV Mini 2 press and hold the PUMP C + BLOWER buttons simultaneously (refer aside)
- Use the UP or DOWN buttons to navigate through the configuration menu items
- Press the OK button to enter setting adjustment
- Press the UP or DOWN buttons to adjust setting
- Press the OK button to confirm and save the setting adjustment

SV Mini 1



SV Mini 2



Press the UP or DOWN buttons to navigate through the menu items until you reach L.SHD, then press OK.

Use the UP or DOWN buttons to set L.SHD to "2". Press OK to save the adjustment.

Spa will no longer load-shed heater.