

# Harvia Heater

## Installation Instructions

Please follow these instructions for the Harvia Heater Installation.

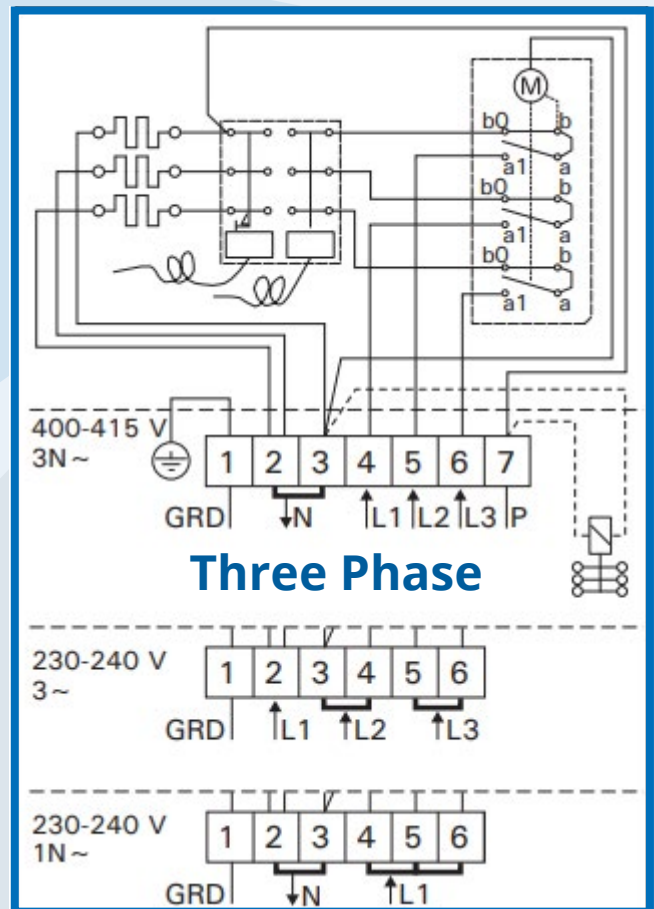
### Wiring Diagram

The provided sauna heater must be installed by a registered electrician. No wiring, switches, RCD or electrical accessories are included.

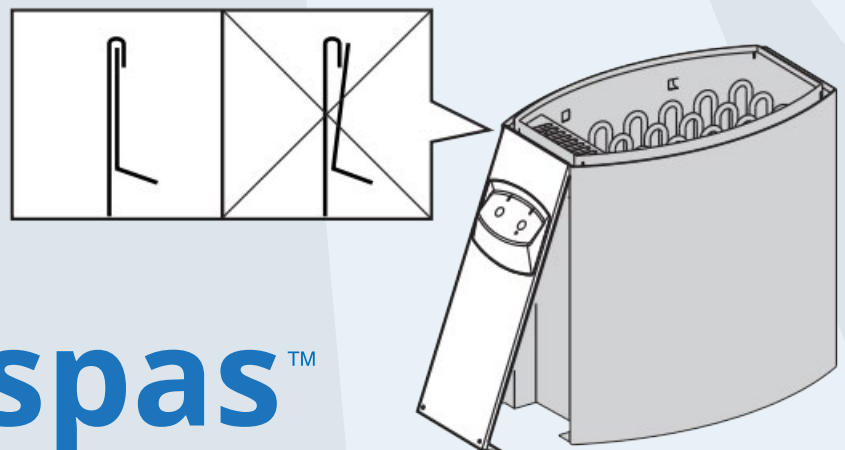
The heater is to be mounted 100mm off ground level on the 'back wall' and surrounded by the provided wooden heater fence.

Cable for the heater can be fed through the back of the sauna through rear wall next to the vents. You will need to drill a hole to run the cable through.

For single phase installations, lines 4, 5 and 6 should be looped together with phase into 5 per the diagram. For a three phase supply, connect each phase to L4, L5 and L6.



Single Phase



# Harvia Heater Installation Instructions

Please follow these instructions for the Harvia Heater Installation.

## Installation Instructions

These are to replace the following heater installation steps in your current Sauna assembly manual for the Harvia Heater

**Barrel Sauna - Steps 38 to 41**

**Cabin Sauna - Steps 56 to 59**

**Vista Sauna - Steps 54 to 57**

**Hut Sauna - Step 42**

1. Remove both cardboard covers before installation.
2. Fasten the wall-mounting rack to the rear wall of the sauna using the provided screws. Make sure the heater is installed level and 100mm off ground level, while allowing enough space to access the control dials. Refer to the Sauna assembly instruction for the heater location.
3. The heater can be installed so the control dials are positioned on the left, or the right-hand side. Install the heat guard accordingly to the rear of the heater, making sure the clips fasten in the hole properly.
4. Lift the heater to the rack on the wall so that the fastening hooks of the lower part of the rack go behind the edge of the heater body. Lock the edge of the heater onto the rack with the supplied screw.

