



alpinespas™

Rolling Cover Holder

INSTALLATION GUIDE



Save Time! Watch our instructional video

Overview

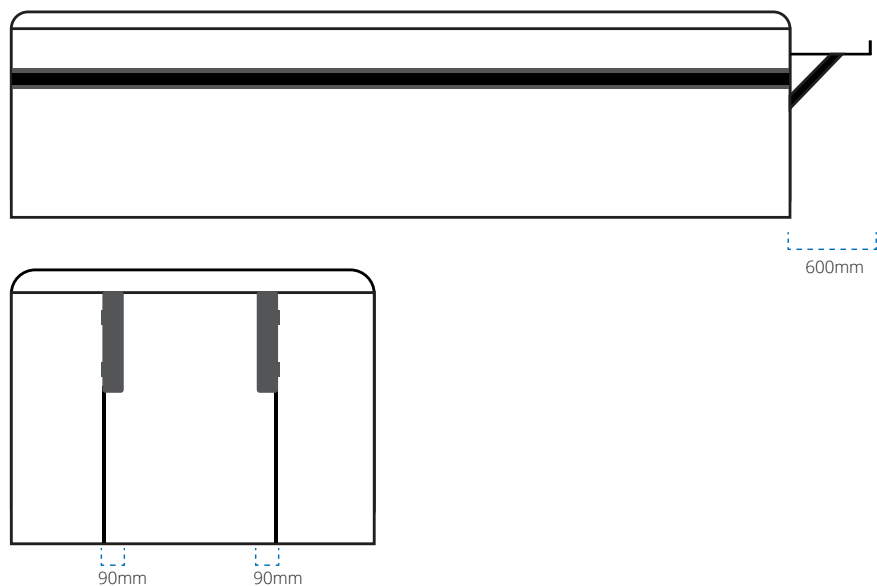
The rolling cover installation process will take around 30 minutes to an hour. We recommend watching our instructional video, simply scan the QR code at the top of the page.

Ensure your swim spa has enough clearance on the desired short end to support both cradles arms when fully extended (600mm). We recommend having an extra person to help with the installation. If you have any trouble or questions during the installation, please do not hesitate to contact the friendly Alpine Spas customer care team.

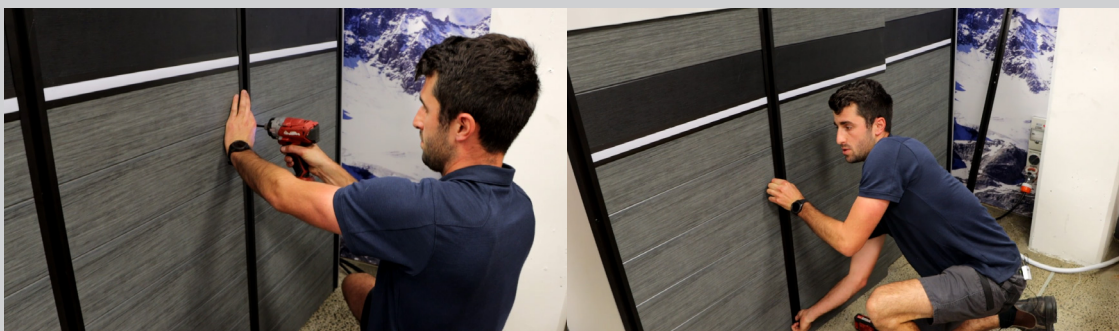
Tools Required

The rolling cover installation requires a drill, a **something** mm drill bit, a philips head drill bit and preferably an extra person to assist holding the cradle pieces as they're being secured to the swim spa.

Installation Information



Installation: Rolling Cover Holder



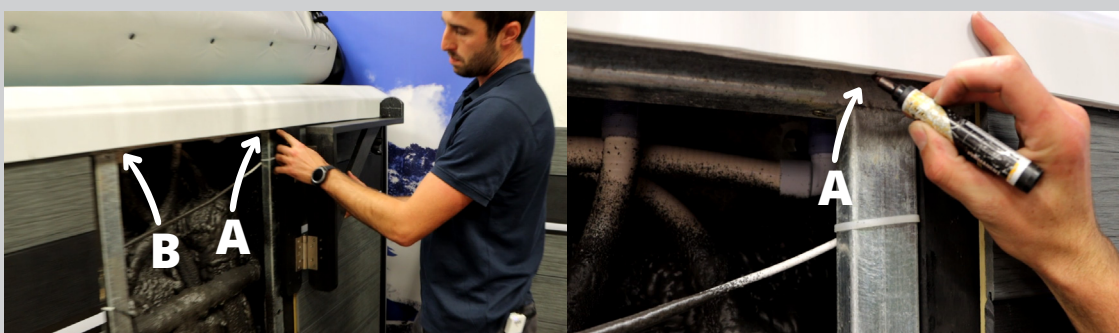
1.

Begin by unscrewing the centre panel on the desired short end of the swim spa. Depending on your swim spa model, you may either have 4 screws on the inside of each aluminum vertical slat (pictured), or 4 screws centred on a composite vertical slat. Move to step 2 before attempting to remove the panel entirely.



2.

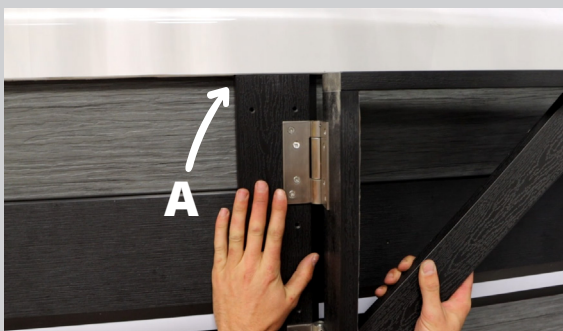
For standard cabinetry, move to step 3. For alumina cabinetry (pictured), before removing the panel, lightly lean it away from the swim spa. Find the LED light strip, then carefully pull through the hole until you find a black connector, and disconnect it. Repeat for both sides of the panel. Once disconnected, you can remove the panel entirely.



3.

The holder will need to be screwed through the cabinet panel and into the steel frame. Mark a small line on the underside of the swim spa shell to show where the inner edge of the where steel frame lies (A). Repeat for the steel frame on the other side (B). This will act as a guide once you have replaced the panel.

Installation: Rolling Cover Holder



4.

Once you have replaced the panel by reversing steps 1 & 2, place the holder bracket against the cabinet so that the hinge and cradle open outward to the edge of the swim spa. Align the inside edge of the bracket up against the mark (A) you made in step 3. Then use a 2mm drill bit to mark a guide by drilling through the top left hole of the holder (don't attempt to drill through the steel yet).



5.

Switch to a 4mm drill bit, then drill through the cabinet panel and all the way through the steel at the guide mark (C) you made in step 4. This may take some time, be patient and apply steady pressure. Make sure the drill remains perpendicular to the spa cabinet while drilling.



6.

Use one of the large screws to secure the bracket in place, keeping one hand holding the bracket steady. Next, drill through the adjacent hole on the opposite side, keeping the bracket level, while applying pressure until puncturing through the aluminum vertical slat.

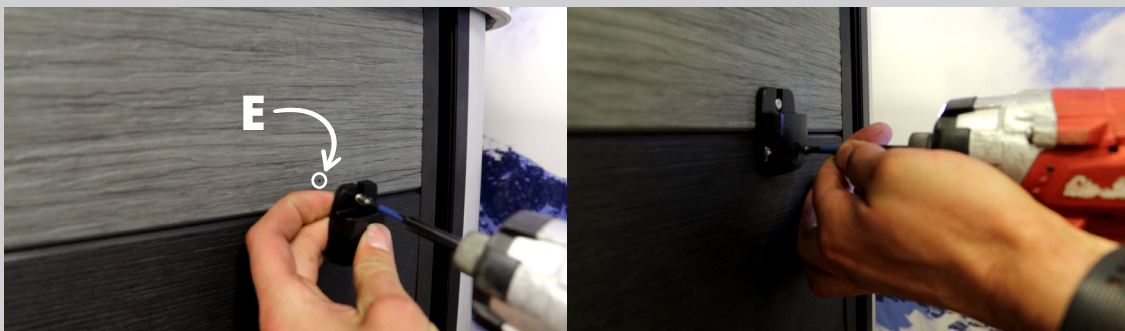
Installation: Rolling Cover Holder



- 7.** Use a second screw for the opposite hole, securing the top side of the bracket. Repeat the process for each pre-drilled hole. **Note:** If you have premium cabinetry with the LED light strip, skip the two holes (D) which would otherwise pierce the LED light strip.



- 8.** Next, with the bracket in the closed position, place the securing buckle against the swim spa cabinet. Disconnect the strap while holding the buckle in place. Use a pencil to mark the position of the buckle. This will act as a guide to assist you placing and screwing in the buckle.



- 9.** Using 3 of the six small screws provided, secure the buckle in the position you marked (E) in step 8. These screws are self-tapering so no pre-drilling is necessary.



10.

Repeat steps 4 to 9 for the second bracket of the rolling cover holder, on the opposite side of the center panel. Once complete, simply set the brackets to the open position, and roll on the cover.



11.

To pack away, roll the cover back onto the swim spa, then swing each cradle outwards, and clip in the buckles to secure.

